

Population:

Census 2023

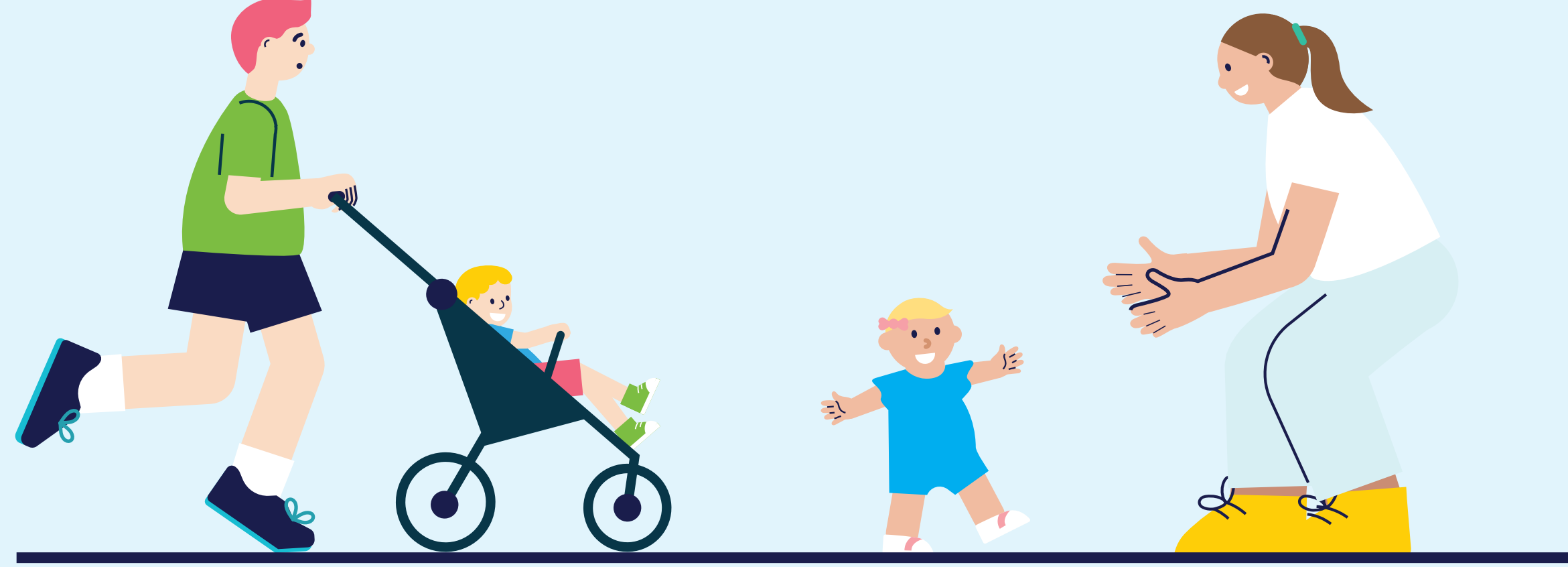


107,562
residents

42,504
dwellings

Projected population:

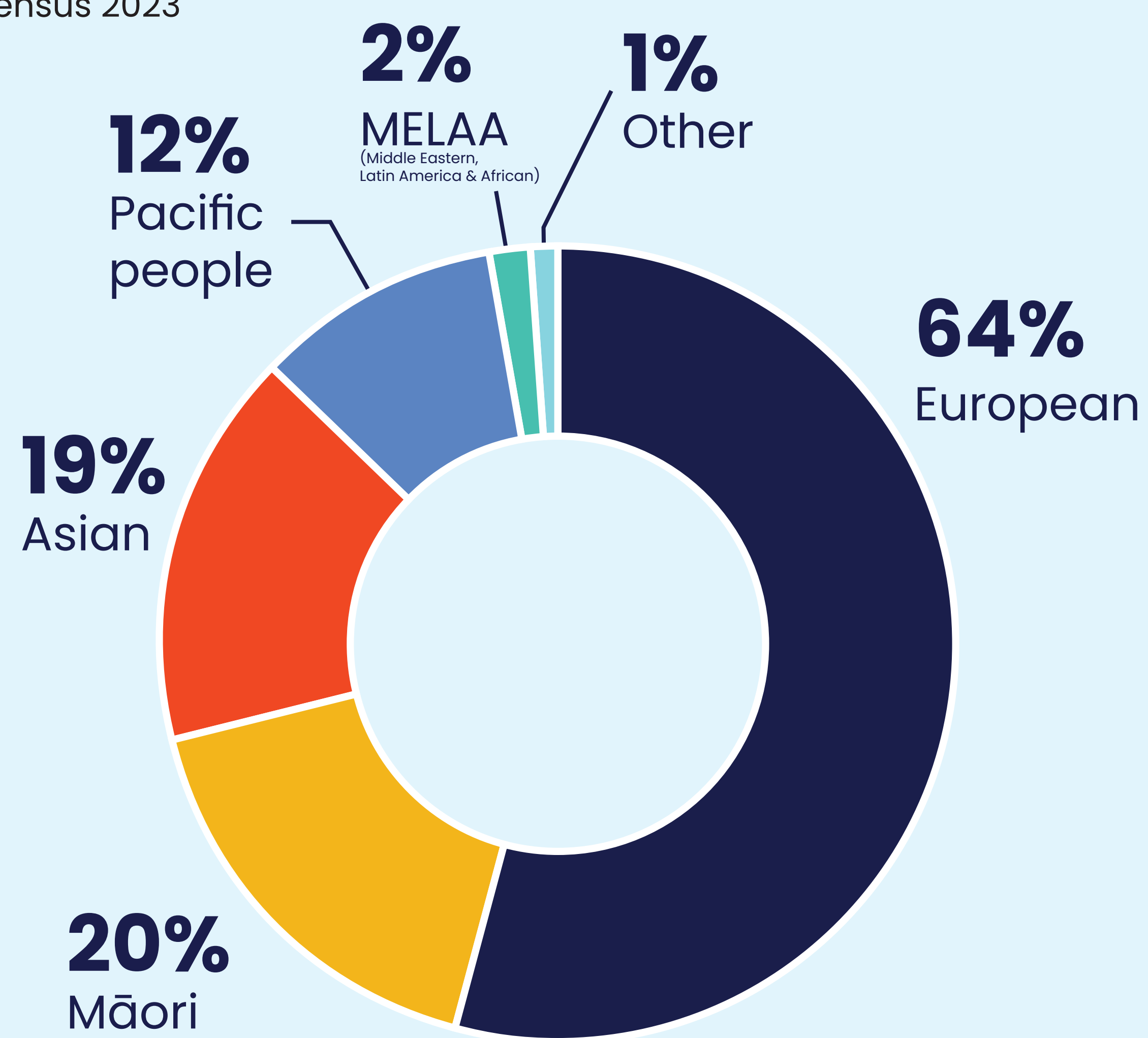
Sense Partners 2023



125,000 – 150,000
projected population by 2054

Ethnicity:

Census 2023



74%
born in NZ
Census 2018



26%
born overseas
Census 2018



4.7%
Māori speakers
Census 2018

1 in 5
people are
Māori

Population by age:

Census 2023

↑ ↓ Increase/decrease compared to 2013

↓ **13,419**
0-9

↓ **14,355**
40-49

↑ **13,557**
10-19

↑ **13,305**
50-59

↑ **13,512**
20-29

↑ **11,208**
60-69

↑ **17,403**
30-39

↑ **10,800**
70+

Ability to cover everyday needs:

Quality of Life Survey, 2022



43%
not enough
or just
enough



Our people

City economy:

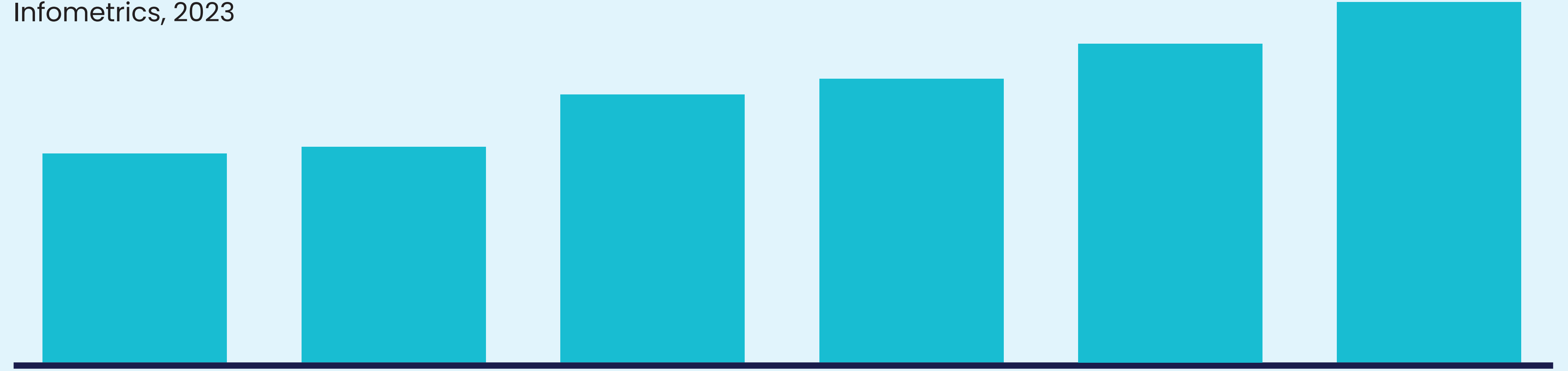
Infometrics, 2024



\$7.47b
GDP

Top industries by GDP:

Infometrics, 2023



\$467m
rental,
hiring and
real estate
services

\$482m
wholesale
trade

\$599m
construction

\$634m
healthcare
and social
assistance

\$713m
manufac-
turing

\$806m
professional,
scientific
and
technical
services

Businesses:

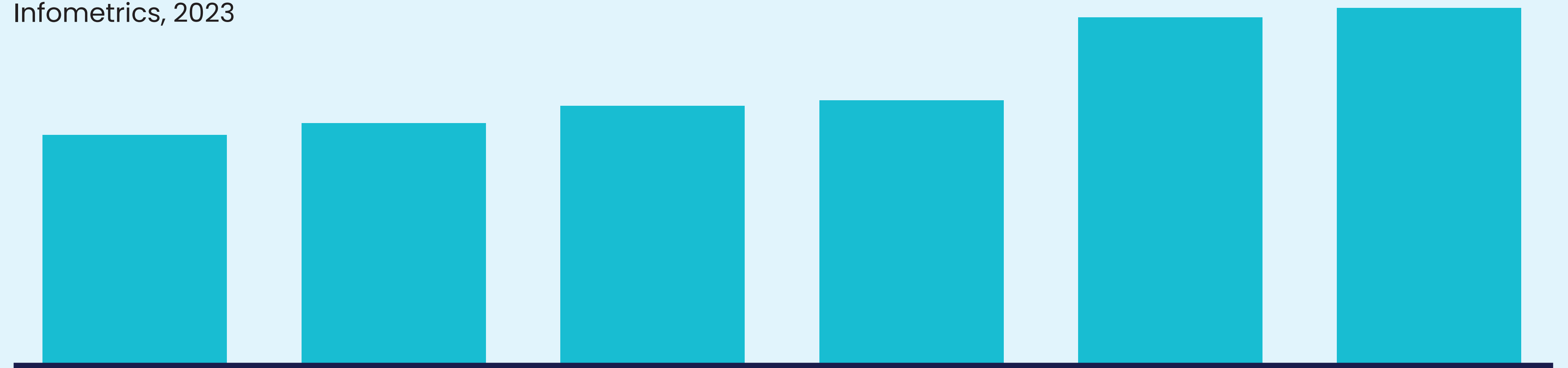
Infometrics, 2024



11,258
businesses

Top industries by number of jobs:

Infometrics, 2023



4,591
education
and
training

4,803
manufac-
turing

5,114
professional,
scientific
and technical
services

5,216
retail trade

6,698
health care
and social
assistance

7,128
construction

Income:

Infometrics, 2023



\$70,262
mean
individual
income



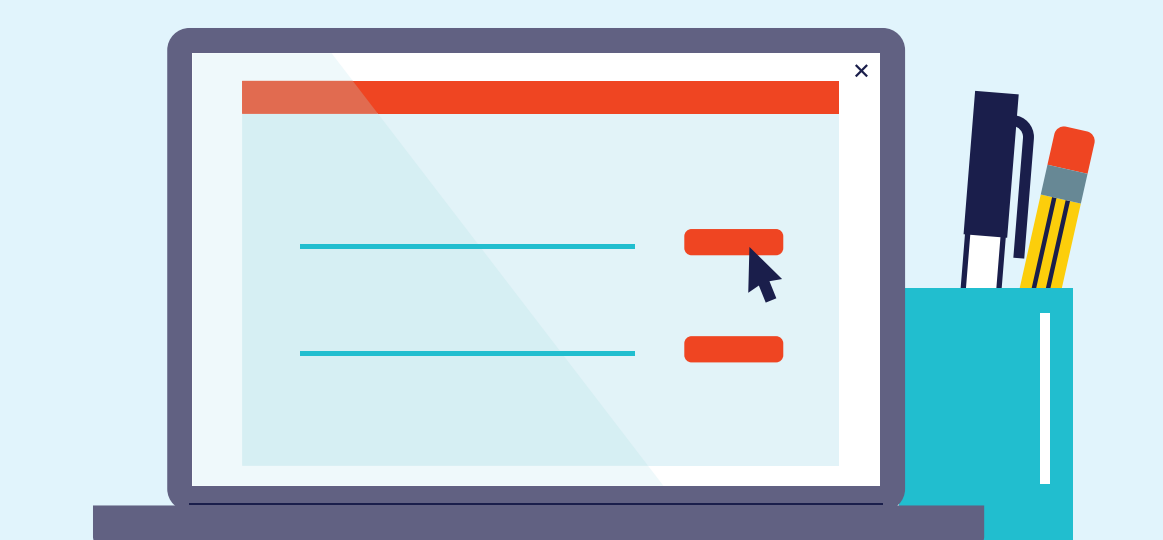
\$135,670
mean
household
income

Employment:

Infometrics, 2024



3.5%
unemployment

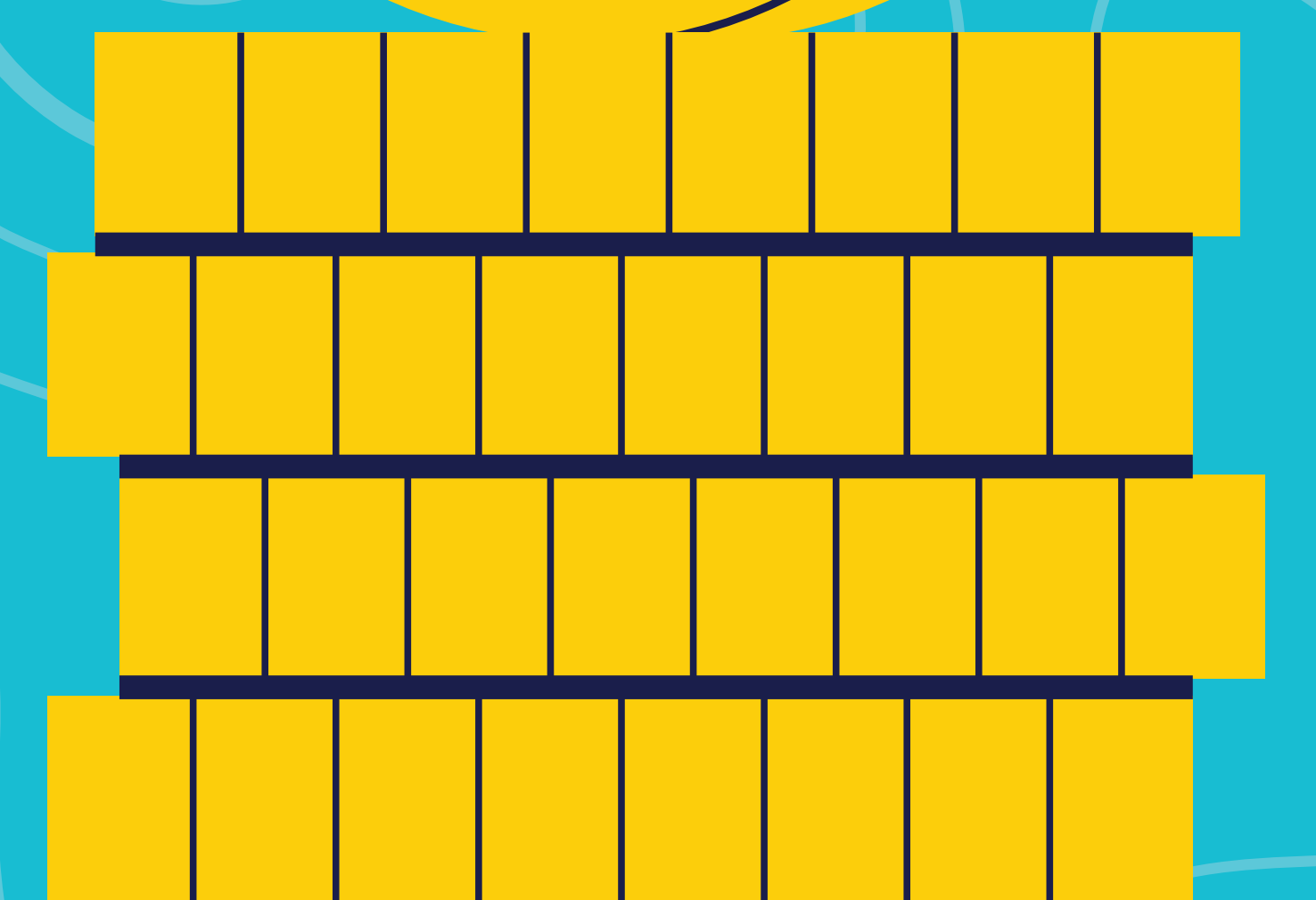


52,530
filled jobs

12.7%
NEET rate
(aged 15-24 not in employment,
education or training)



Our economy

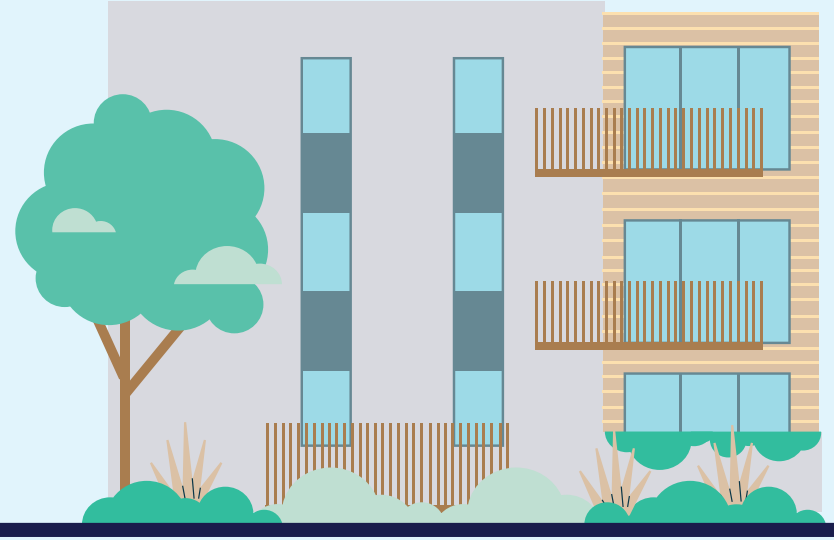


Area:

376.4km²

total area

Stats NZ, 2023



78.5km²

urban

Stats NZ, 2023



297.9km²

rural

Stats NZ, 2023



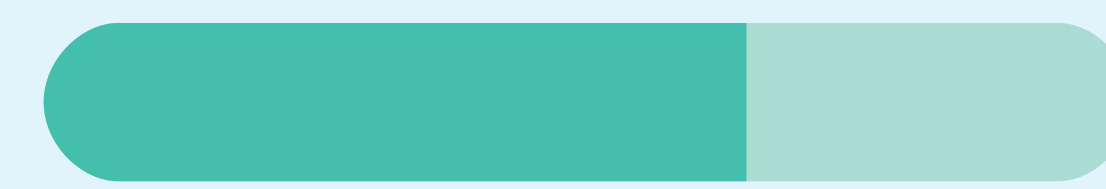
10

key native ecosystems covering approximately 11,622 hectares

Hutt City Council

Perceptions of environmental issues:

Quality of Life Survey, 2022



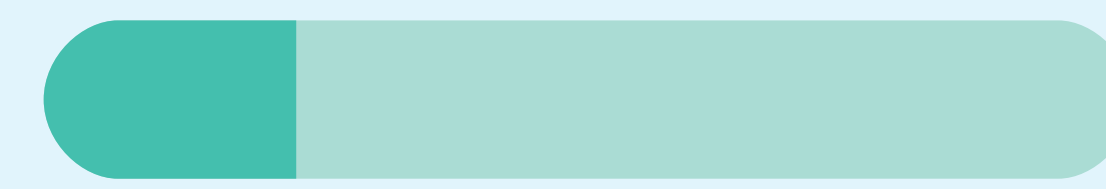
64%

water pollution



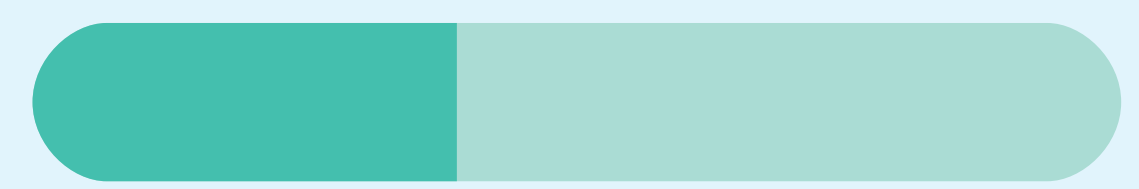
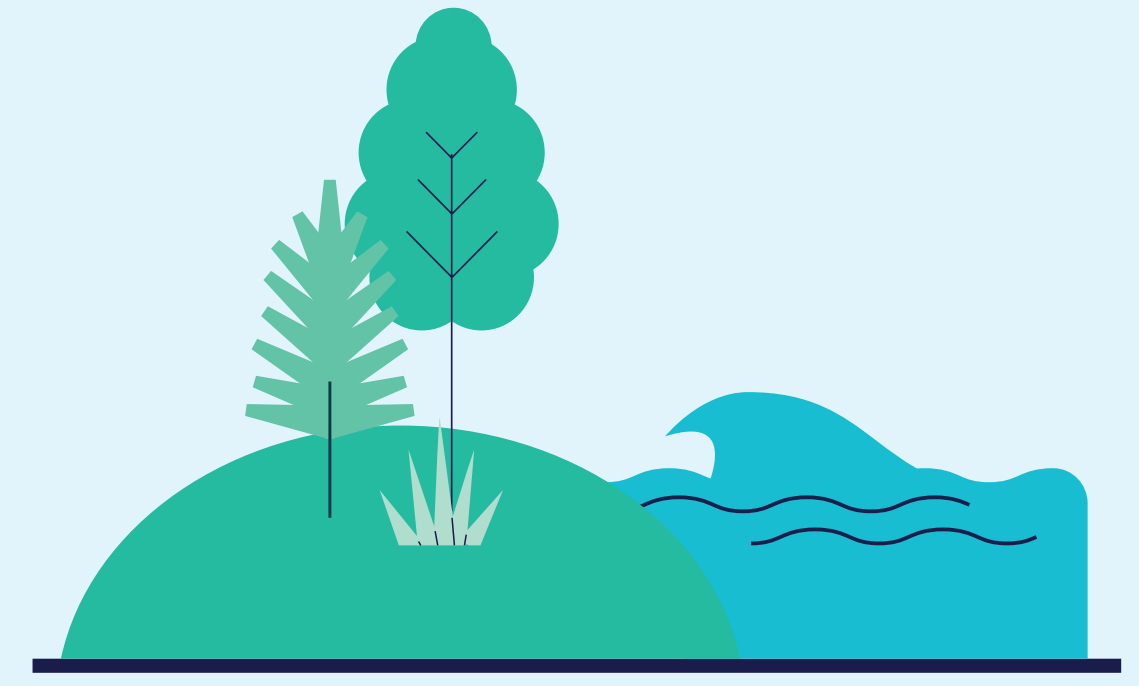
44%

noise pollution



24%

air pollution

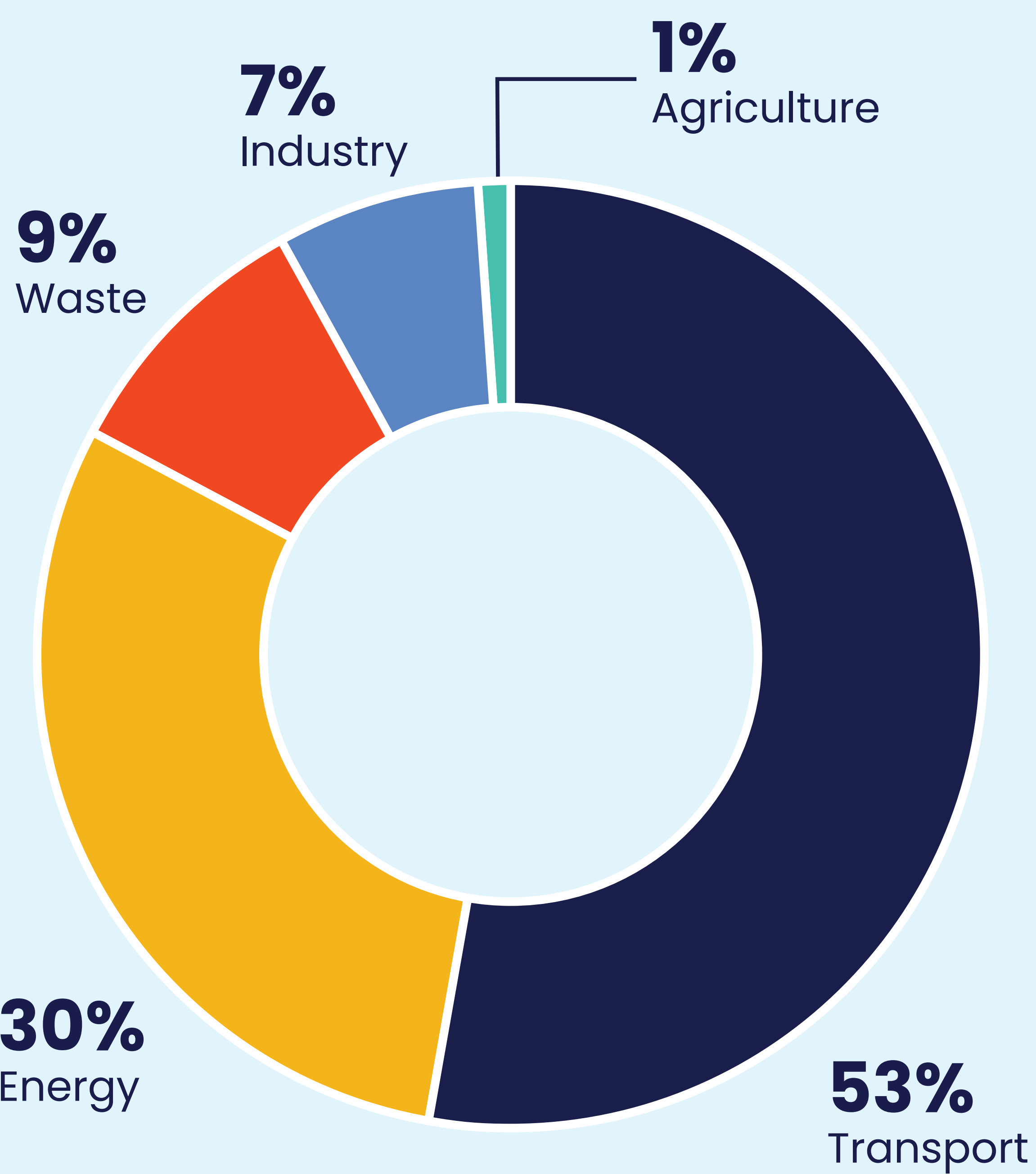


39%

are worried or very worried about the impact of climate change on the city

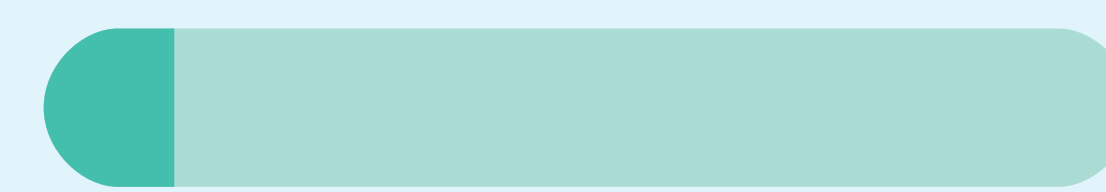
City emissions:

Lower Hutt Emissions Inventory 2021/22, AECOM, 2024



475,520_{tco_{2e}}

total gross emissions



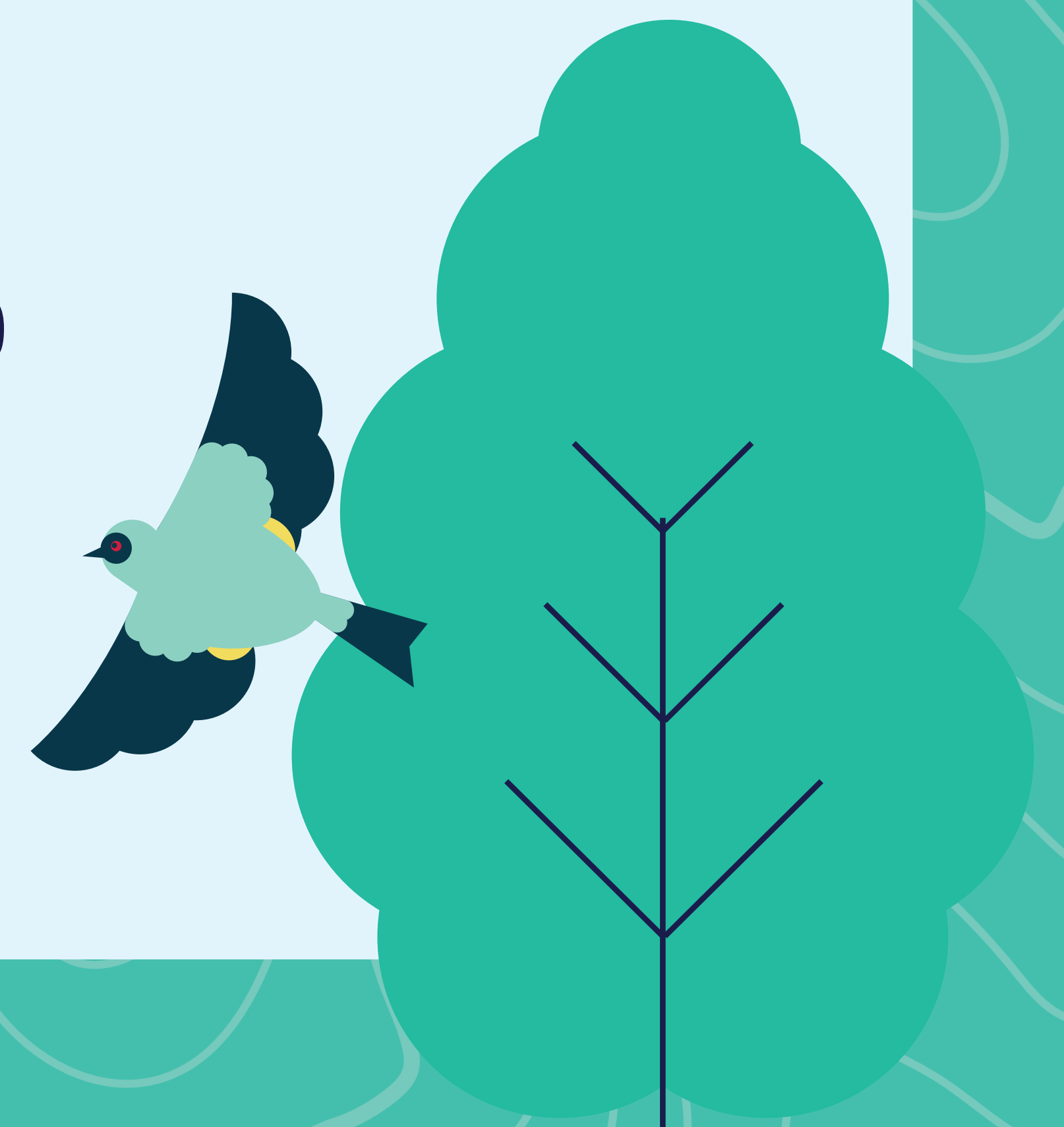
12%

drop in net emissions between 2018/19 and 2021/22



-65,372_{tco_{2e}}

native forest sequestration



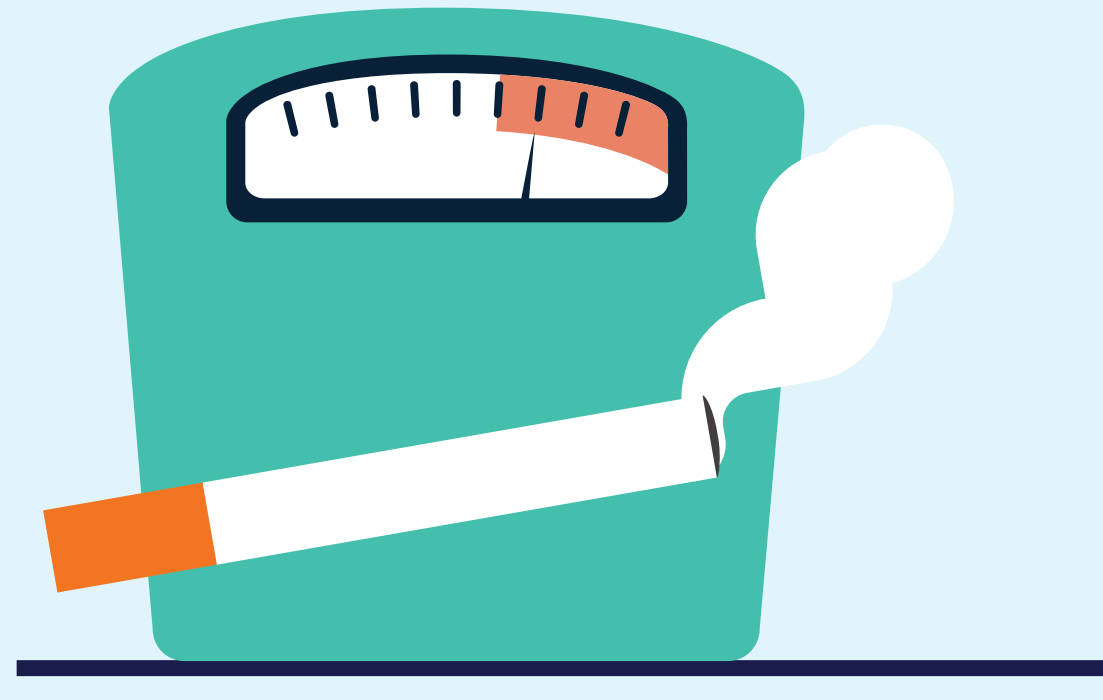
Our environment

Health & wellbeing:



73%
consider they
are in good
physical health

Quality of Life Survey, 2022



14%
of people
are regular
smokers

Census 2018



68%
consider they
are in good
mental health

Quality of Life Survey, 2022



73%
of Hutt Valley
residents are
overweight or
obese

NZ Health Survey, 2017-2020

Education:

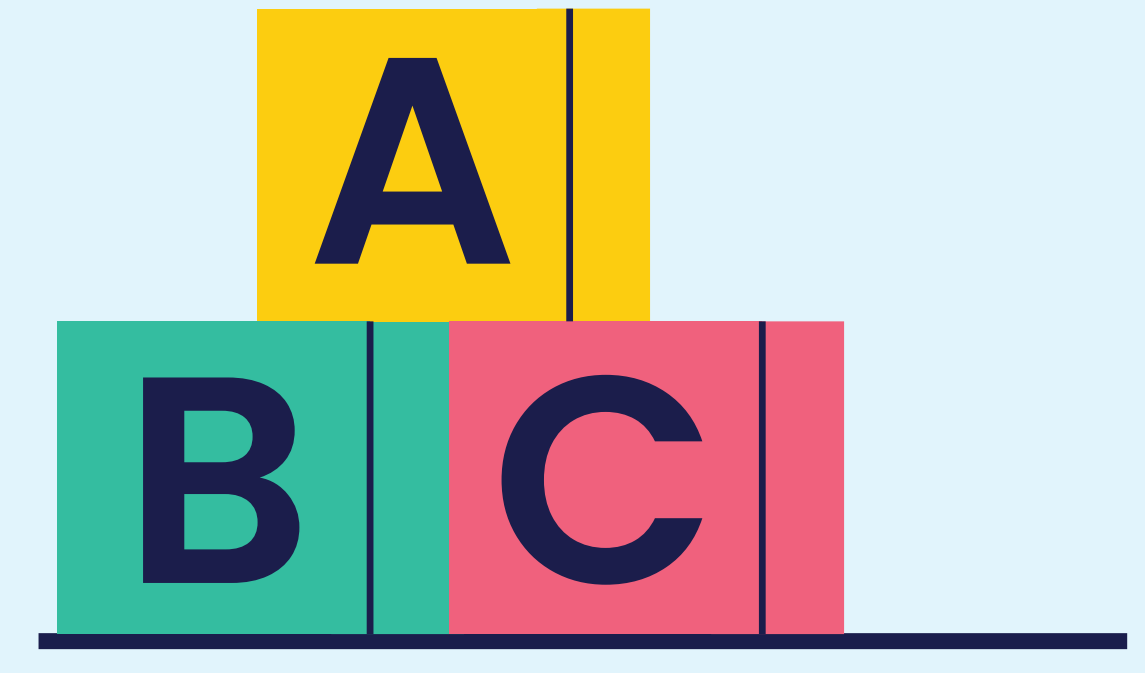
Education Counts, 2023



53%
of students
leave school
with NCEA Level
3 or above



15%
of students
leave school
with no NCEA
qualification



4,144
children
enrolled in
ECE (Early
childhood
services)

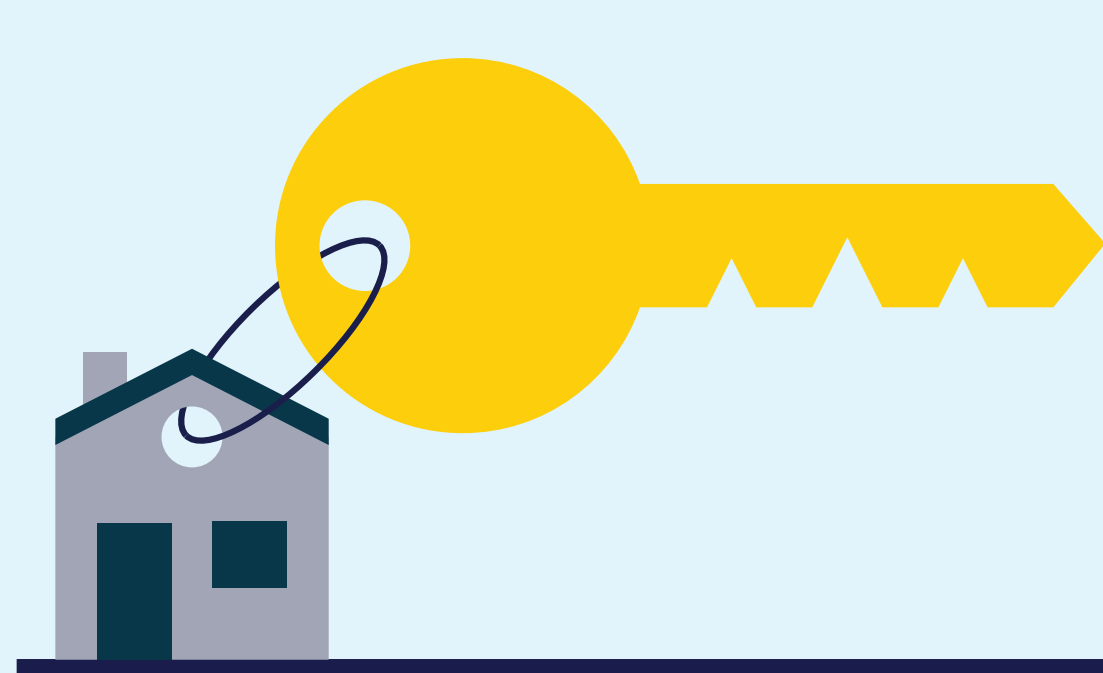
17,105
students attend
schools in
Lower Hutt

Housing:



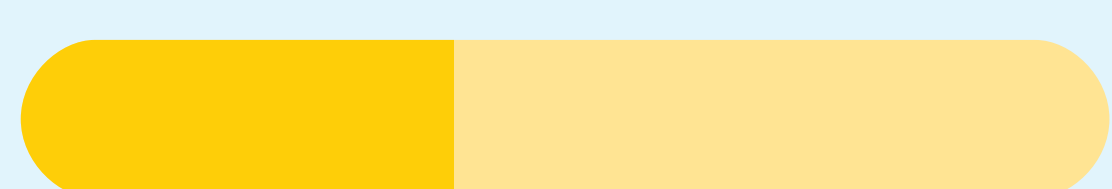
\$784,451
average
house value

Infometrics, 2024



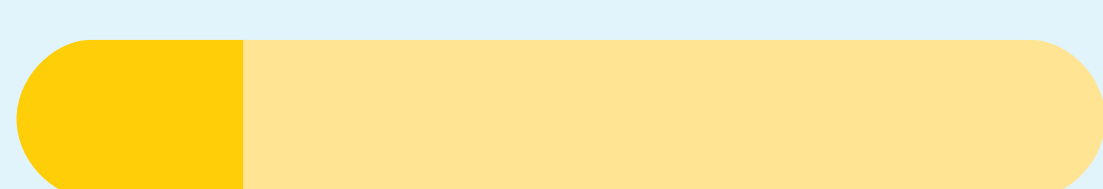
\$574
average
weekly rent

Infometrics, 2024



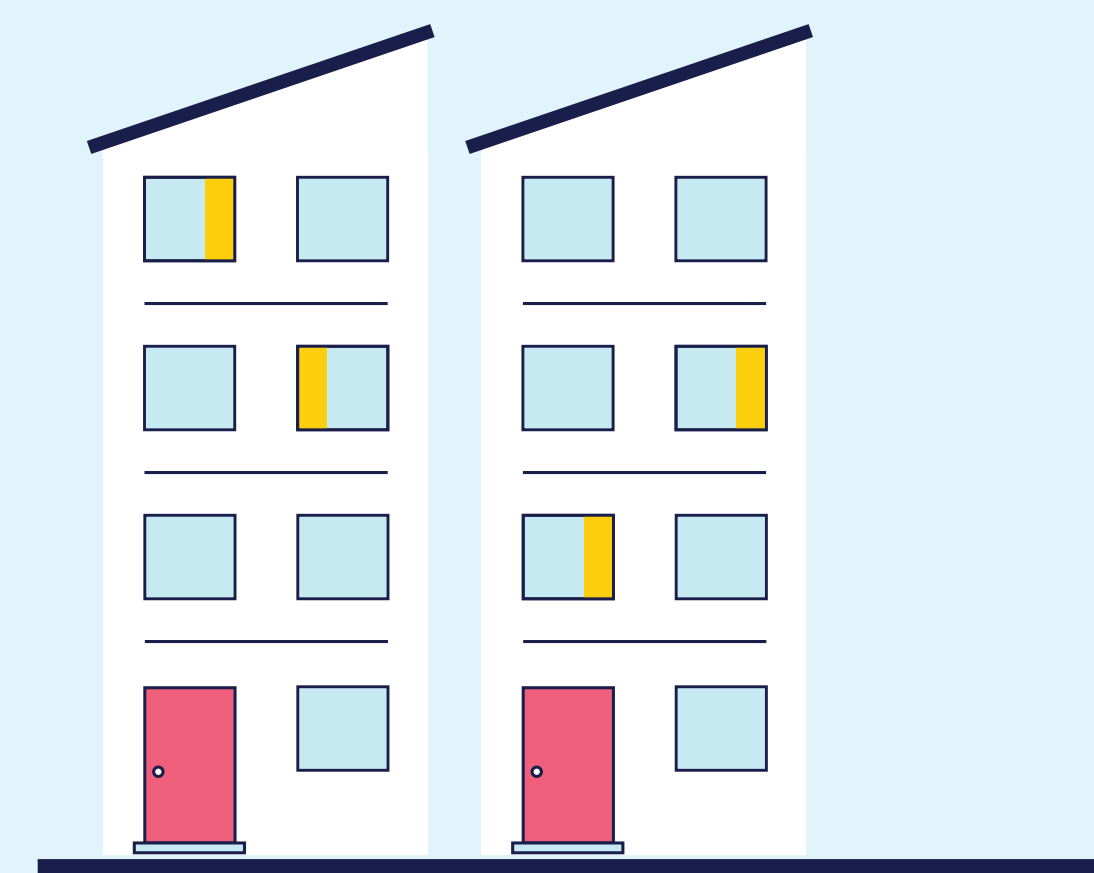
39.8%
mortgage as
% of household
income

Infometrics, 2024



20.8%
rent as % of
household
income

Infometrics, 2024



3,593
public houses
in Lower Hutt

Infometrics, 2023



612
applicants on
the housing
register

Ministry of Social Development,
2024

4,506
new homes
built
between
2010-2024

Hutt City Council



Our society